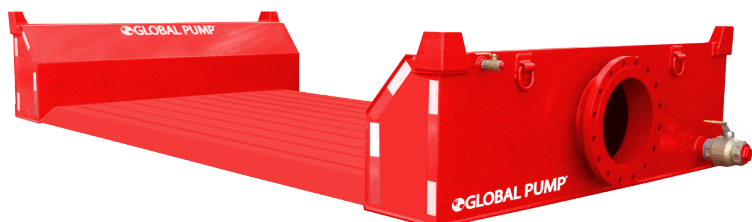


Road Ramp

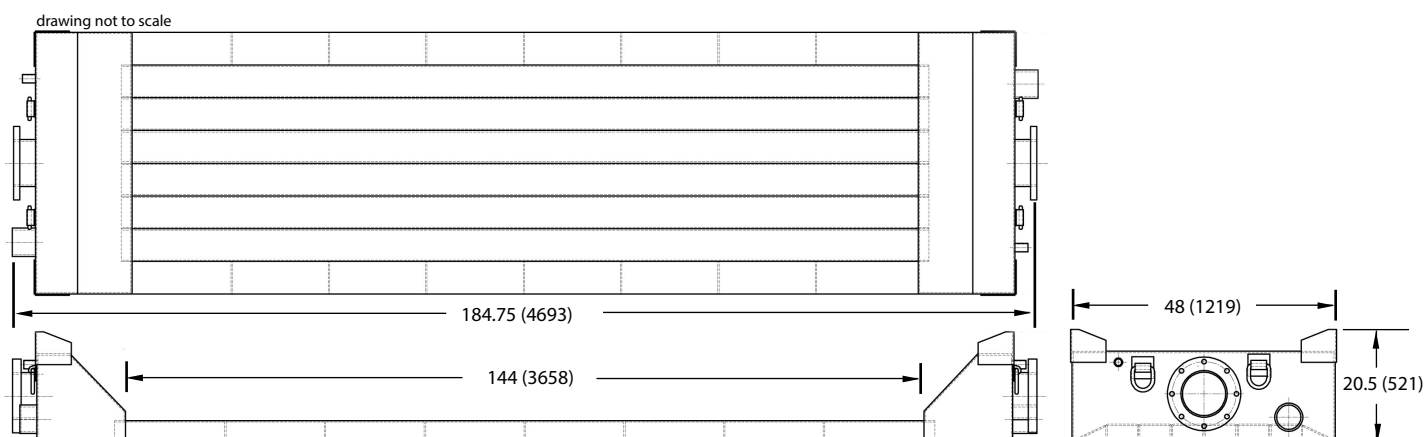


Global Pump® road ramps are the solution when a temporary crossing is required over a pipeline.

Whether commercial, industrial or residential, Global Pump Road Ramps offer low traffic areas access across 4-inch to 18-inch pipelines.

- Low profile for comfortable crossing
- Solids handling capability
- Steel construction
- 8 inch (200 mm) ANSI Flanges
- Designed to stack for simple storage

8" Ramp



FEATURES

- 8" Road Crossing with 12' wide vehicle ramp
- Two 1/2" (12.7 mm) Pressure Gauge Ports
- Four weld-on D-Rings
- Two 3" (76.2 mm) clean-out ports
- Four 3/4" (19 mm) safety flag mounting posts
- White & Red D.O.T. reflective safety tape
- Four nail/tie downs tabs with 3/4" (19 mm) hole
- Compliance with Federal Bridge Law (20,000 lbs./Single Axle)
- Allowable Working Pressure – 80 P.S.I.

ROAD CROSSING SPECIFICATIONS:

- Overall footprint: 48" (1219 mm) wide
- 12' (3.66 m) vehicle net width (Optional 20' version)
- Two 8" Inlet/Outlet 200# Flanges
- Four 5/8 (15.9 mm) inch D-Rings
- 12" (305 mm) wide angled entrance/exit ramps
- Rectangular tubing dimensions: 3" x 6" (76 x 152 mm)
- Galvanized in accordance with ASTM A-384 & A-385 standards
- Requires full ground contact in tire track zone